

Expanding Machine Capabilities

ULTRA[®] IMT[™]

**Fully Indexable
Multi Tool**

- **3-Station**
- **8-Station**



PATENT
PENDING

mate.com/IMT

Part Number 2010

Worldwide headquarters:

1295 Lund Boulevard, Anoka, Minnesota 55303 USA

Tel 763.421.0230 Fax 763.421.0285 mate.com

MATE[®]
M
**PRECISION
TOOLING**
TRUSTED | QUALITY | SERVICE | SOLUTIONS

Mate **ULTRA® IMT™** Fully Indexable Multi Tools

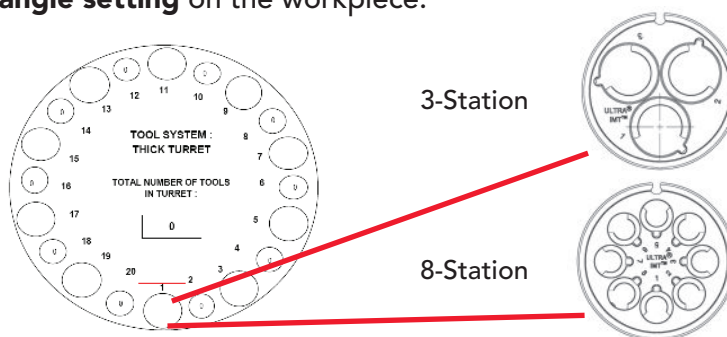
The Ideal Multi Tool. Delivered.™

What is a fully indexable multi tool?

A multi tool allows a standard indexing D-Station in a punch press to accept 8 or 3 "mini" stations. By using just one multi tool, your 20 station punch press becomes a 22 or 27 station press, expanding your capacity much more economically than purchasing an additional machine.

Mate's patent pending **ULTRA® IMT™** is a fully indexable multi tool that adds flexibility and expands the ability of a standard multi tool because, unlike standard multi tools, which can only have one angle setting, fully indexable multi tools can **achieve any angle setting** on the workpiece.

20 station press becomes
a 22 or 27 station press
with just one multi tool!



Mate offers two versions of **ULTRA IMT** fully indexable multi tool:

- 3-Station uses **ULTRA TEC®** 1-1/4" B-Station punches and strippers, and thick turret B-Station dies. It can punch up to 6mm material with maximum tonnage of 16 tons (142kN).
- 8-Station uses **ULTRA TEC®** ½" A-Station punches and strippers, and thick turret A-Station dies. It can punch up to 6mm material with maximum tonnage of 7 tons (62kN).

Customer Driven Design.

Mate conducted extensive customer research before embarking on the design of **ULTRA IMT**, providing them with the opportunity to define their version of the ideal multi tool:

Customers Requested	Mate Delivered
Easy to use and maintain	With ULTRA IMT , no tools are required for punch, striker and stripper retention/removal, making assembly and disassembly simple.
Ability to use standard punches, dies and strippers to minimize and simplify tooling inventory	ULTRA IMT uses Mate ULTRA TEC punches and strippers, and thick turret dies, eliminating the need for specialized inventory.
Increased tool life with adjustable length punches	With ULTRA IMT 's design, punches screw on to a punch head allowing easy length adjustment.
Variable stripping force options for heavy-duty and light duty applications.	With ULTRA IMT you can adjust the downward force to reduce sheet marking in thin material or aluminum.*
Easy active station identification.	ULTRA IMT has a clearly viewable "Zero Mark" and station ID window to quickly see the active station to help reduce potential error.
Improved ergonomics.	ULTRA IMT 's design makes it easy to wrap your hands around the holder. Plus, you can also use a T-Handle to assist in lifting the holder.
Easy turret installation	ULTRA IMT features better a external slot lead-in from the stripper retention plate, making installation a breeze.

* Do not exceed recommended tonnage. Consult product instructions for details.



Easy Maintenance. No Tools Required!



ULTRA IMT is designed to minimize your effort and maximize your uptime because you don't need tools to remove the striker plate, change punches, or for routine maintenance. Simply twist the striker plate to align the release dimples and remove. How easy is that!



Tools are not needed to install or remove punches either. You might say it's as easy as 1-2-3!

1. Rotate the skid plate to the clearance position.
2. Align the punch driver and punch keys.
3. Slide the punch into the pocket.



Quickly adjust the length of your punches by using the built-in length guide. Place the tip of the punch against the flange and rotate the punch driver to the guide body edge

MATE ULTRA® IMT™ Features:

Lubrication Port to
all moving parts

Striker Assembly
fits only one way
for ease of use

Release/Zero Mark
Position Indicator

Punch Carrier

One piece Guide
design for tighter
tolerances allowing
burr-free punching of
thinner materials

Punch Holder Body
made with hardened
tool steel

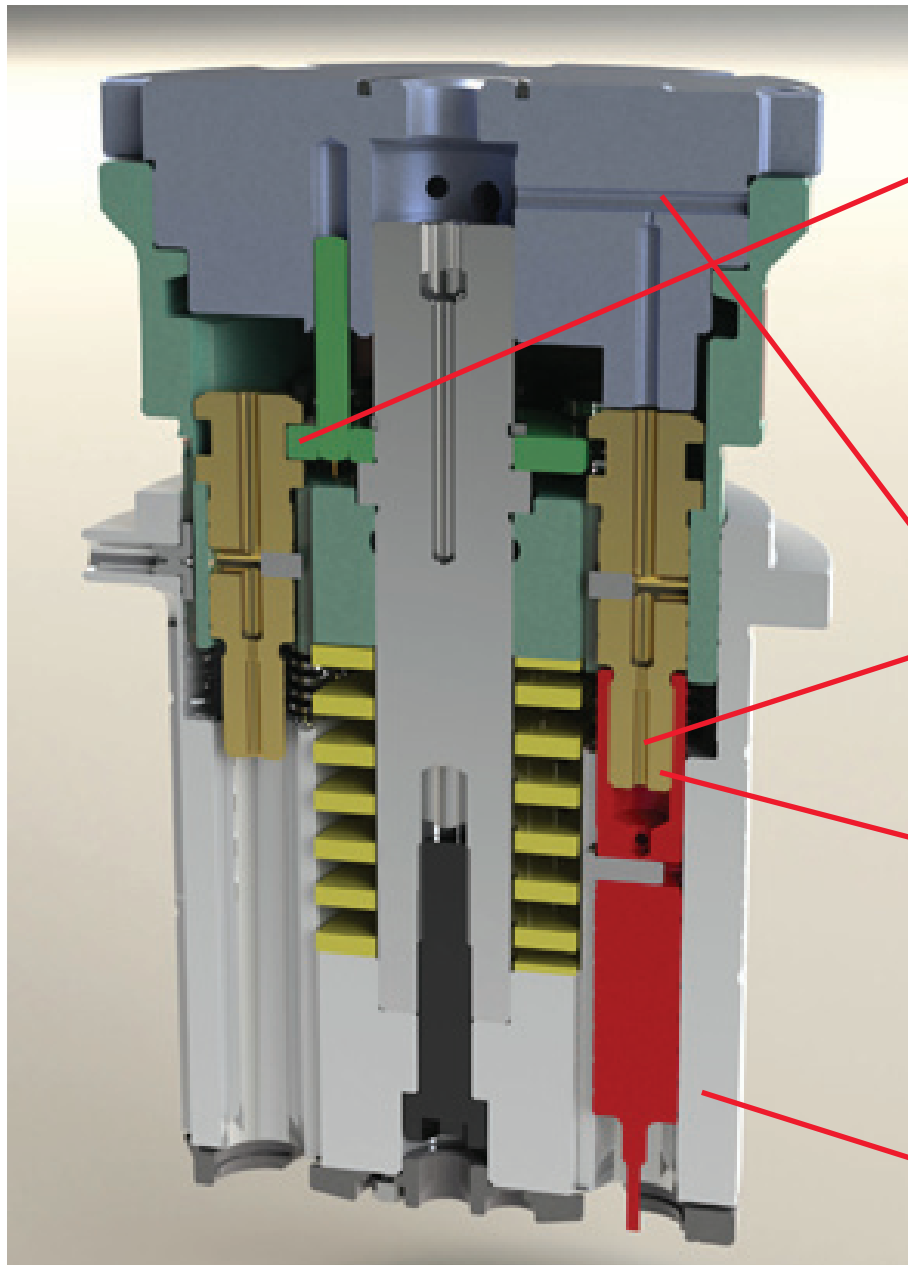
No tools needed for
punch and stripper
installation or
removal

PATENT PENDING
8-Station model shown

Replaceable stripper
plate costs less than
replacing whole guide



MATE *ULTRA*[®] IMT[™] Features:

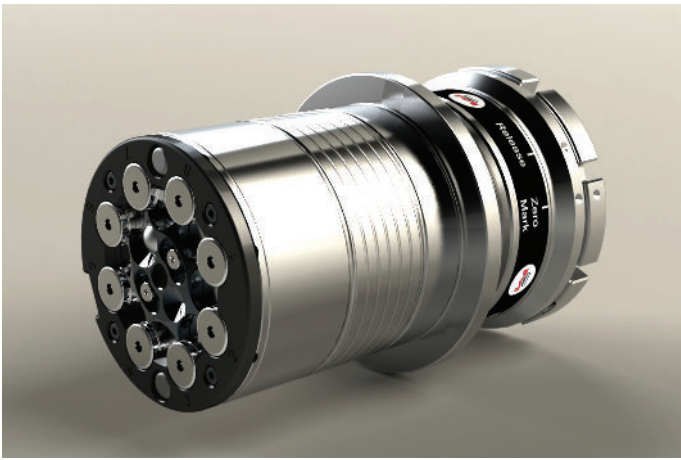


Dual direction punch retention

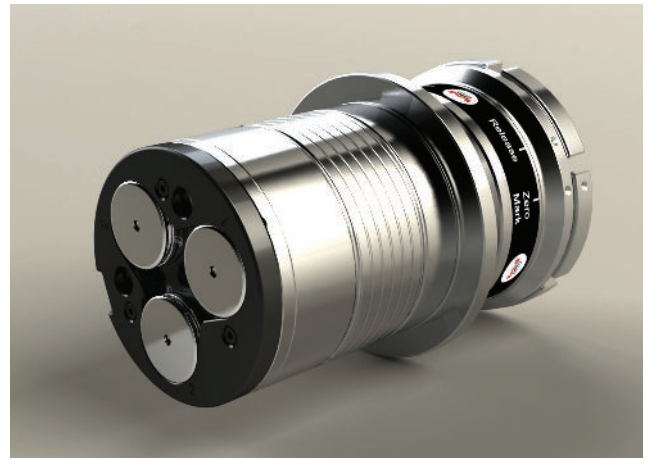
Fully ported for lubrication

Adjustable punch length

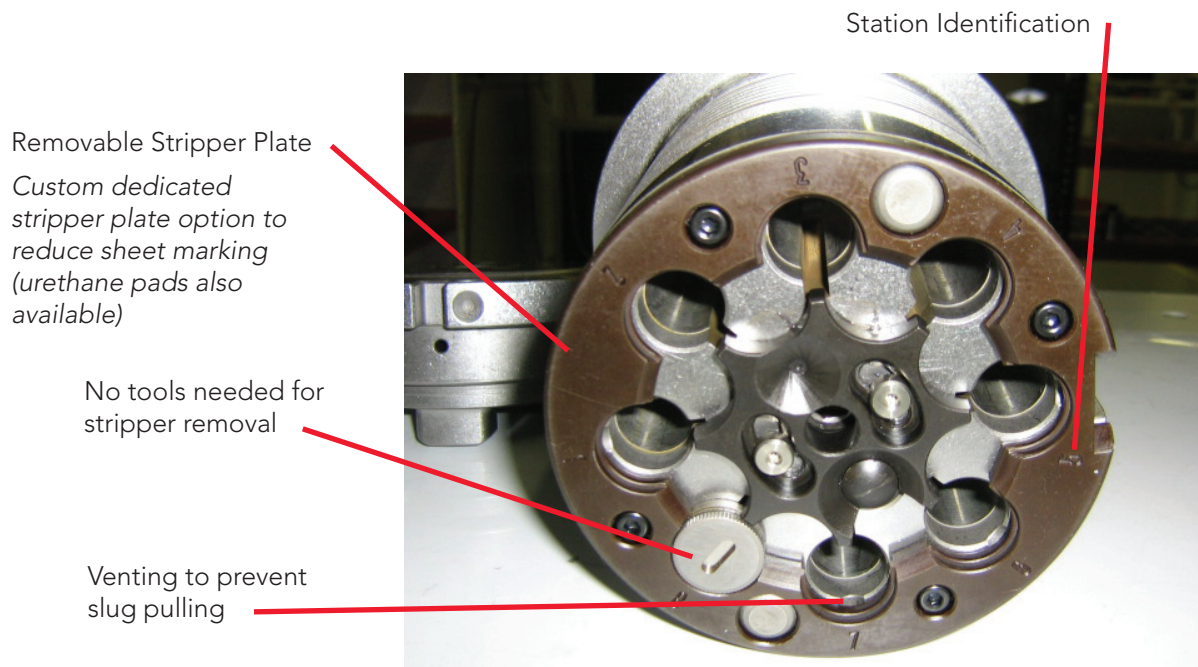
Fewer fits for improved accuracy



ULTRA® IMT™ 8-Station Indexable Multi Tool



ULTRA® IMT™ 3-Station Indexable Multi Tool



Removable Stripper Plate
Custom dedicated
stripper plate option to
reduce sheet marking
(urethane pads also
available)

No tools needed for
stripper removal

Venting to prevent
slug pulling

Performance and uptime are key. These design features deliver:

- One-piece guide design with fewer fits and tighter tolerances for high precision punching, tighter die clearances, and rigidity for nibbling.
- Sheet metal marking protection: Urethane pads available, unused punches are retained in the up and down direction, and a custom dedicated stripper plate.
- Lubrication grooves on punches and O.D. of guide. Fully ported for lubrication to moving parts.
- Strategically placed vent ports to prevent slug pulling.
- Hardened punch holder body for extended product life.
- Compatibility with high speed punches.

Order Guide

ULTRA® IMT™ 3-Station

Upper **MATE01850**
Lower **MATE00697**

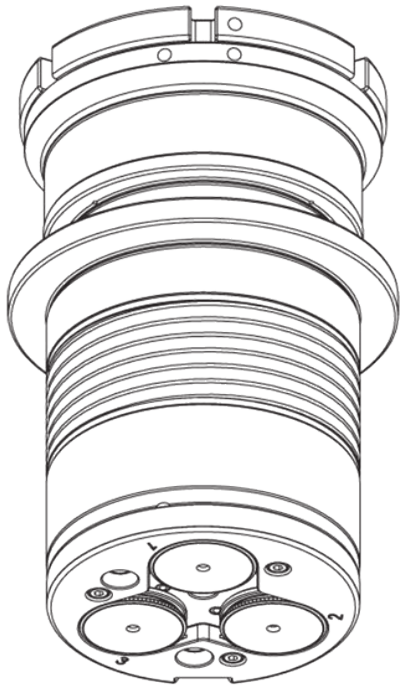
Uses *ULTRA TEC*® B-Station punches, strippers, and thick turret dies.

ULTRA® IMT™ 8-Station

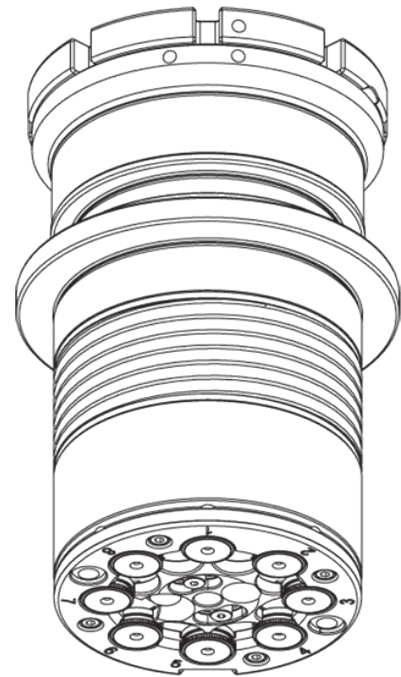
Upper **MATE01840**
Lower **MATE00050**

Uses *ULTRA TEC*® A-Station punches, strippers, and thick turret dies.

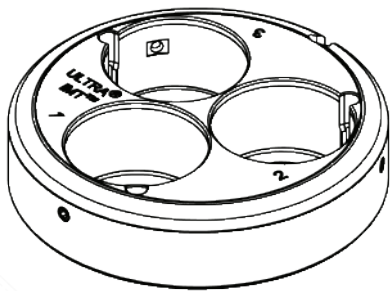
NOTE: see *Mate literature LIT00569* for ordering information on *ULTRA TEC* punches, strippers, and thick turret dies.



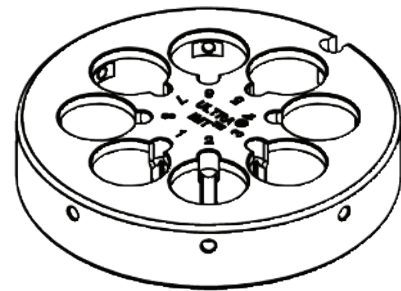
ULTRA® IMT™ 3-Station Upper



ULTRA® IMT™ 8-Station Upper



ULTRA® IMT™ 3-Station Lower



ULTRA® IMT™ 8-Station Lower



MATE[®]
**PRECISION
TOOLING**

mate.com



The Mate logo is a registered trademark of Mate Precision Tooling Inc. in the USA, Canada, China, Germany, India, Sweden, and U.K.
ULTRA is a registered trademark of Mate Precision Tooling Inc. IMT is a trademark of Mate Precision Tooling Inc.
All trademarked names mentioned in this document are the property of their respective owners.

Mate Tooling Lasts Longer

1295 Lund Boulevard, Anoka, Minnesota 55303 USA
Call 763.421.0230 • Fax 763.421.0285 • mate.com